

Real-time container monitoring - a valid alternative to 100% Scanning



SECURESYSTEM

WE KEEP YOU SAFE

Dr. Wolfgang Busch
Project Manager SecureSystem
ECITL 10 in Bremen, 5th November

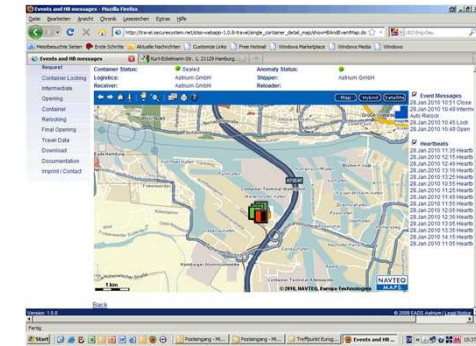
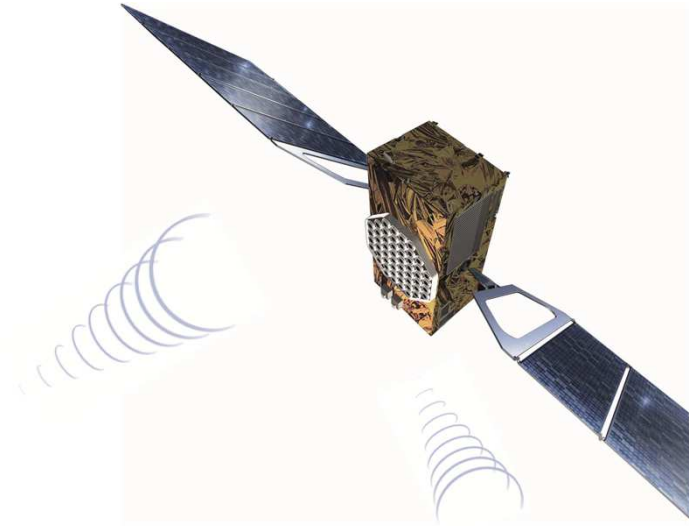


Comprehensive Security

- • World wide, 24/7 availability
- • Coverage of the complete supply chain with real time capability
- • Independent from ground based infrastructure
- • Transparency from loading point to de-loading point
- • Utilisation of e-certificates allows highest authenticity of data and pursues the concept of responsibility
- • Data quality supports usage of data in logistic- and traffic management application



Your container in view - worldwide

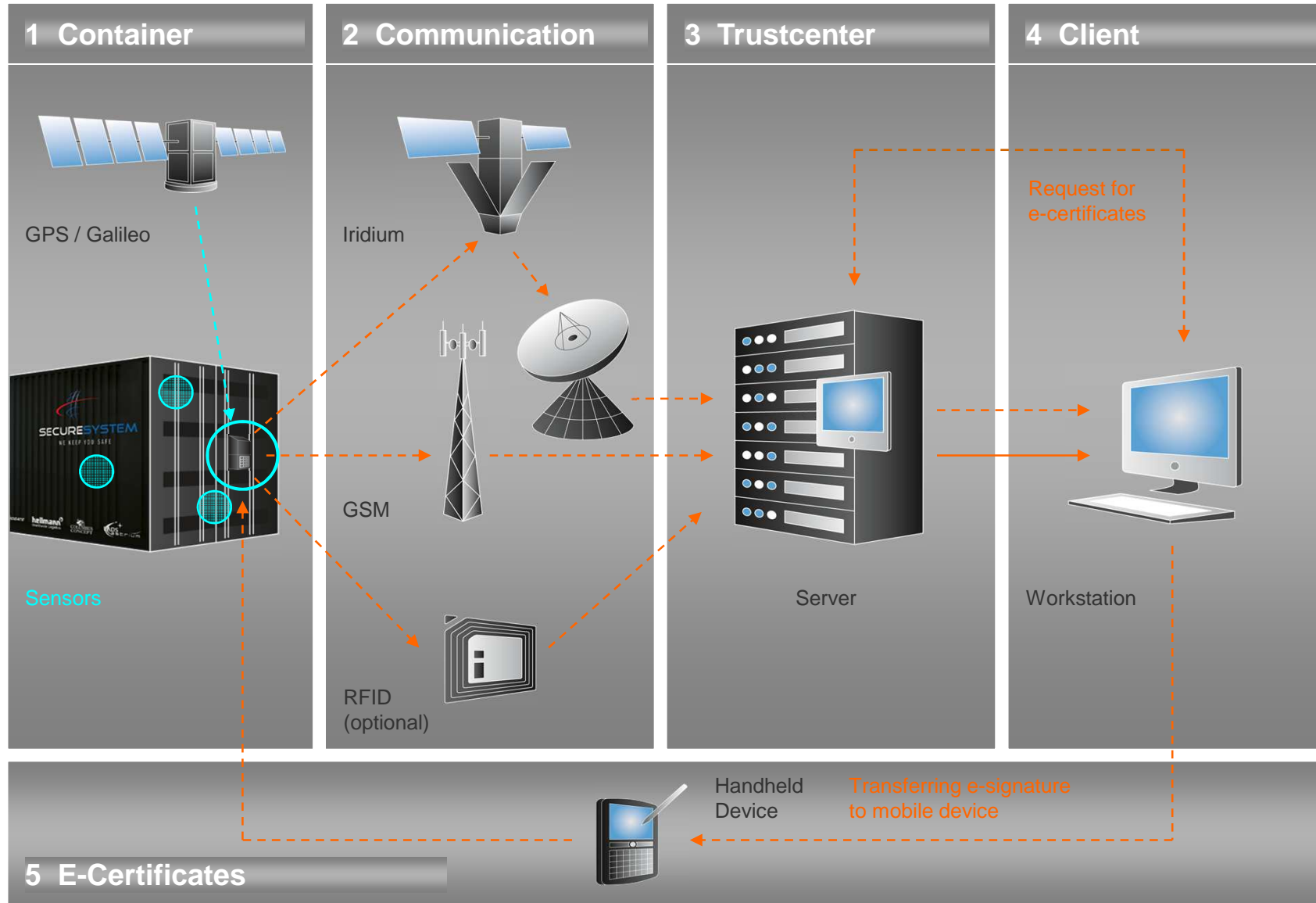


e-signature





System Overview



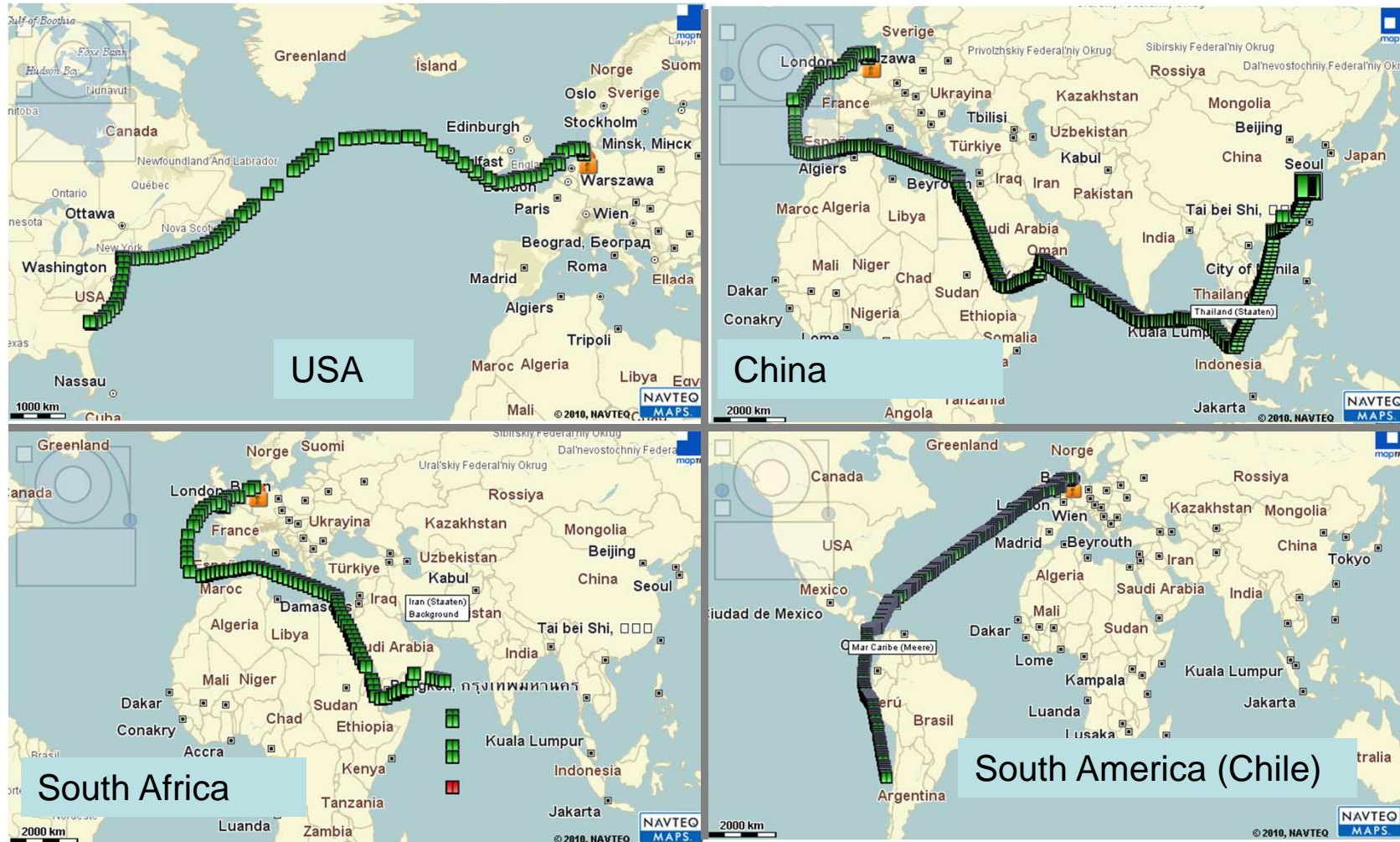


Service Portfolio

- 100% access control to the container
- Definition of persons being authorised to close and open the container
- Real-time indication of any unauthorised openings
- Tracing/Tracking and Container identification
- Temperature monitoring with real time alarming function
- Graphical display in digi-maps
- Complete transport documentation
- API Interface definition for data support to other logistic and traffic management applications



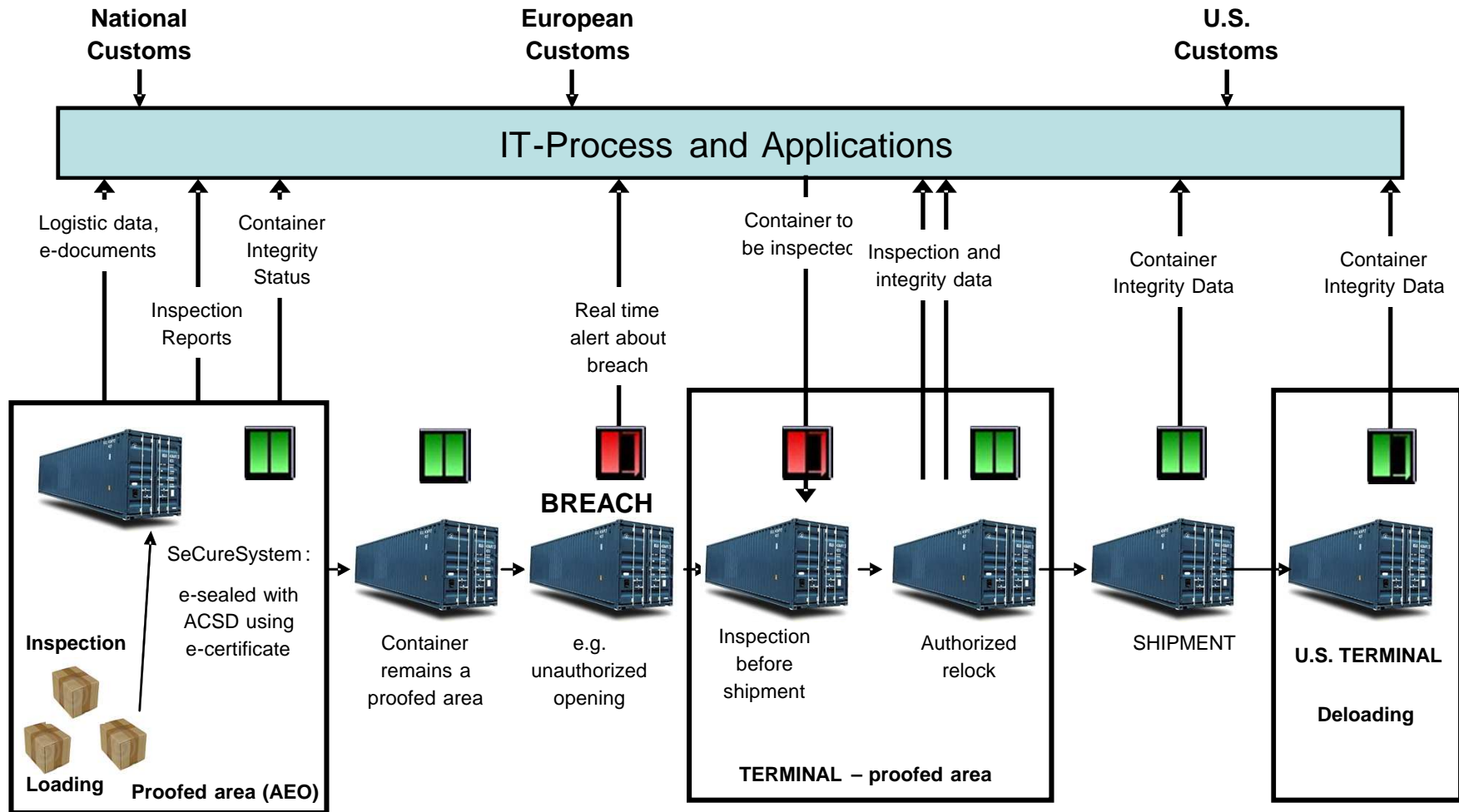
World-Wide Transparency





Security Concept – Trusted Area

- Indicative System with real-time capability
- Container is sealed in a known and trusted area
- Container remains a trusted area during it's transport
- E-Certificates allow the identification of persons who are empowered to open/close a container
- Deviations from the original status are indicated in real-time (e.g. unauthorised access, deviations from a defined temperature range)
- Supports multi-layer approach in risk-assessment of container trades





Performance – Tech. Features

- Real time alerts < 2minutes
- World-wide coverage without ground infrastructure
- Battery pack lasts for >1500 messages which equals to at least three trades between Bremen and Shanghai (Basis: Regular Message every two hours)
- No additional Software installation at customer site required
- API as basis for interface to other SW applications is available
- Access to systemcenter from any Internet point possible and on the basis of user accounts and user hierachies
- Unique electronic certificates for single trades and single opening/closing events



Tech. Features con't

- Solution for ISO container: Fully mountable in less than 10sec.
- Solution for Reefer container: Full integration into cooling device including power supply
- Standard solution:
 - 3 temperature sensors, can be distributed in the container interior
 - Humidity sensor
 - Electro-optical sensors for intrusion detection
 - Mechanical sensors for door opening and mount status



Commercial Performance

- Start of commercial operation at the beginning of 2010
- More than 300 commercial trades conducted until end of 3rd quarter 2010
- Service to customers in all market segments:
 - Shipper
 - Forwarder
 - Carrier
 - Military
- Product Segments
 - Reefer
 - ISO Container
 - Drinking Water Container



User Application – Example

Integrity

Parameter Range

Event History

Pictogramms

Track&Trace



- Please visit us – on our web-site:

www.securesystem.net



- Powered by



ASTRIUM
AN EADS COMPANY

In cooperation with

